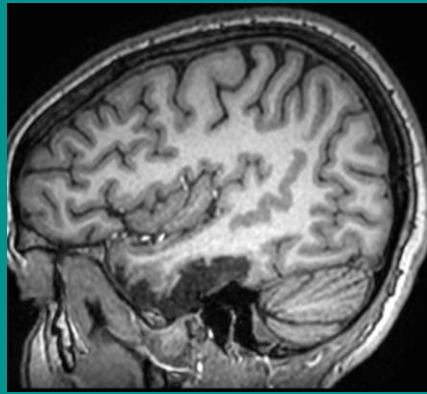
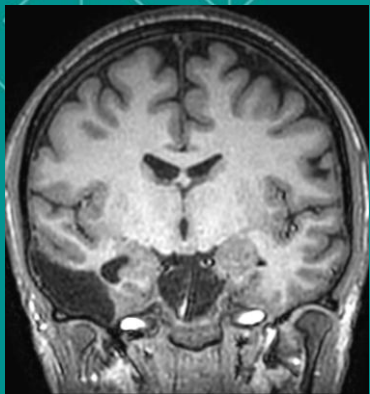
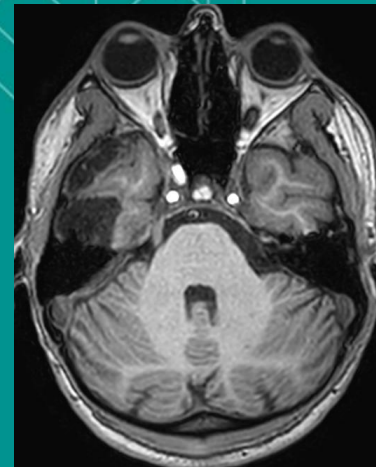
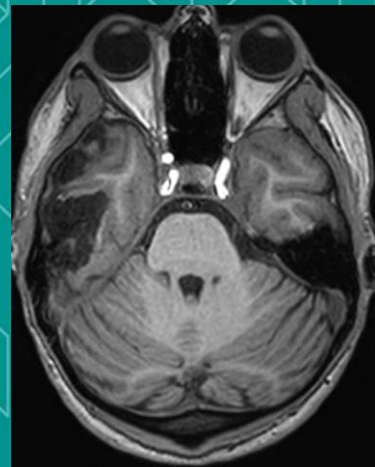
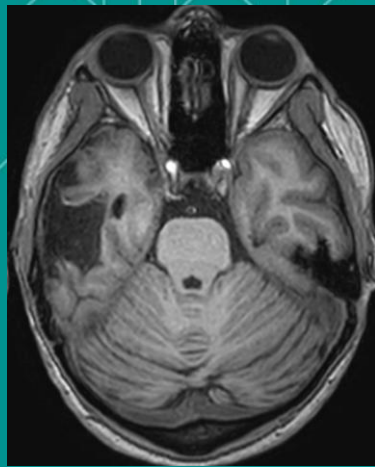
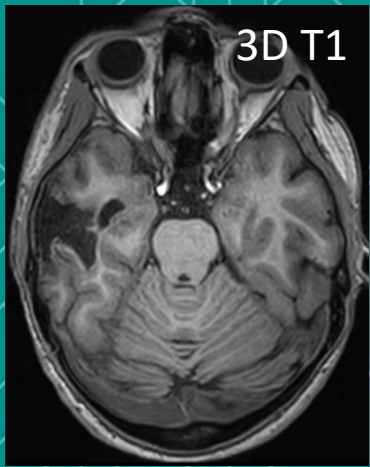


# Les crises convulsives en radiologie de ville : medley de cas

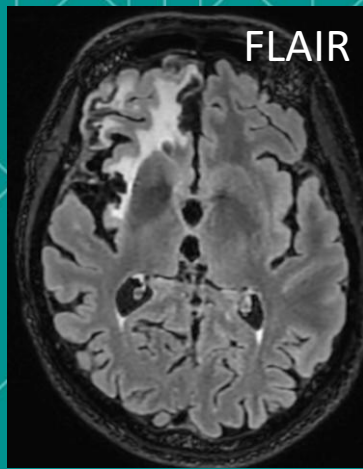
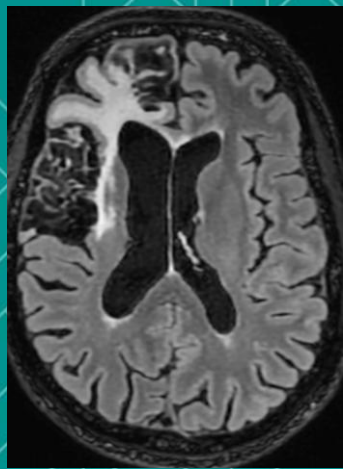


Dr Mina Petkova  
Institut de Radiologie de Paris

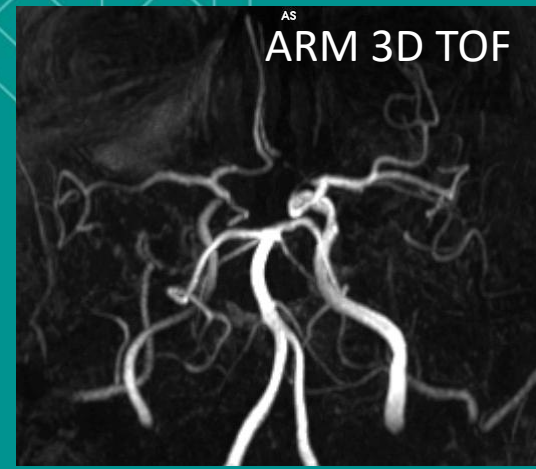
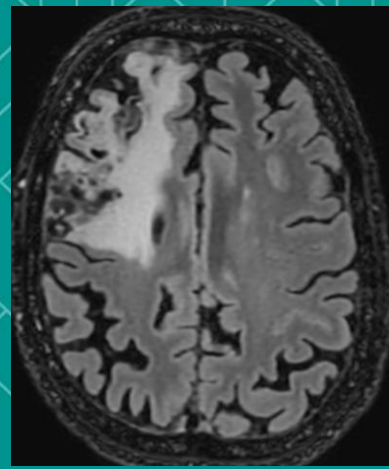


Séquelle cortico-  
sous-corticale  
temporale  
inférieure droite  
post-traumatique

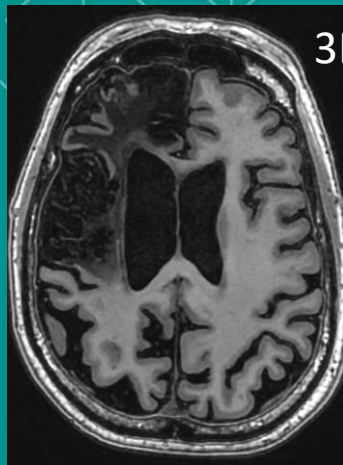
Femme de 29 ans, crise convulsive généralisée  
ATCD 1 an auparavant de traumatisme crânien avec perte de connaissance et  
crise convulsive généralisée



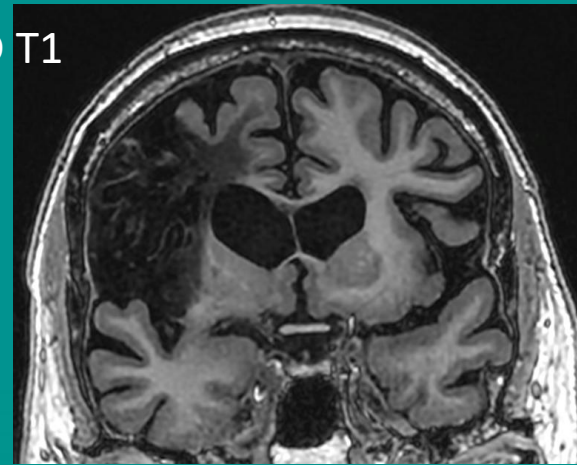
FLAIR



AS  
ARM 3D TOF



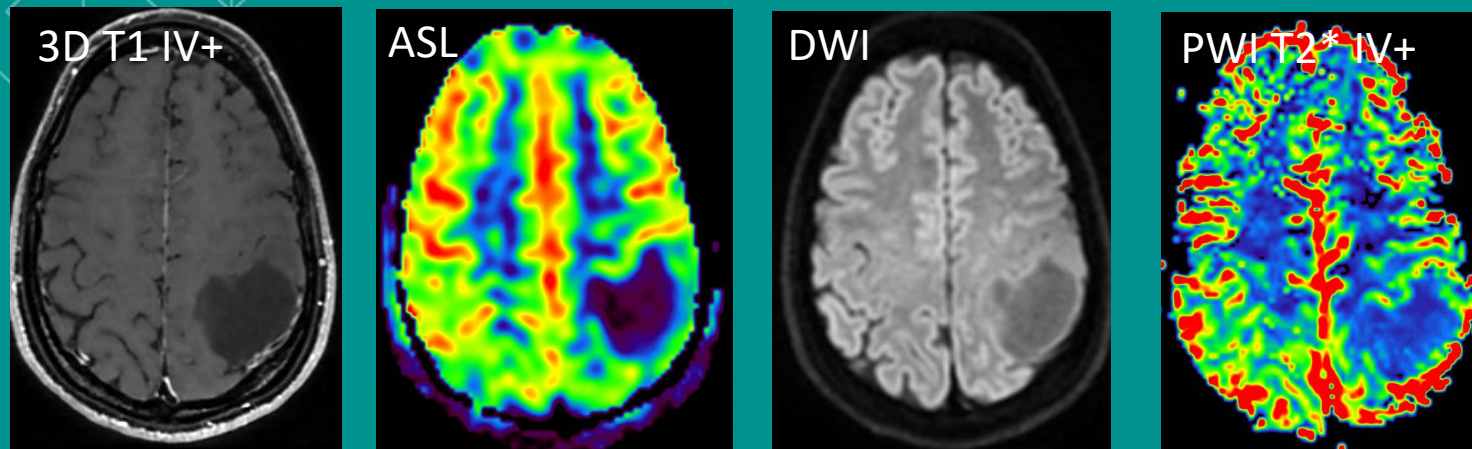
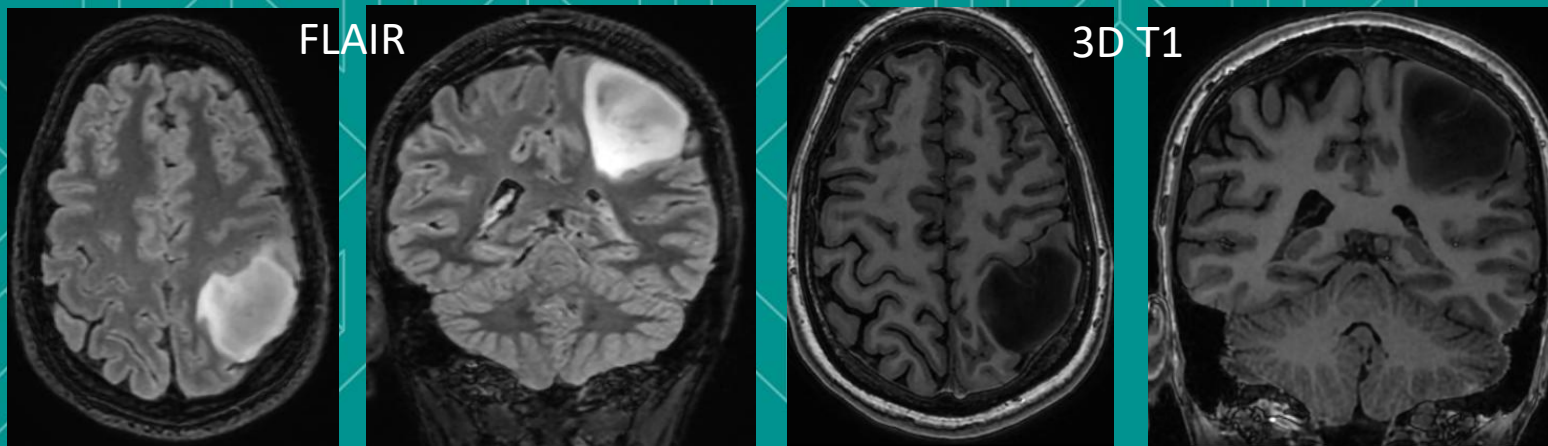
3D T1



Séquelle ischémique  
cortico-sous-corticale  
frontale droite de territoire  
carotidien interne droit  
(cérébral moyen et  
antérieur superficiel)

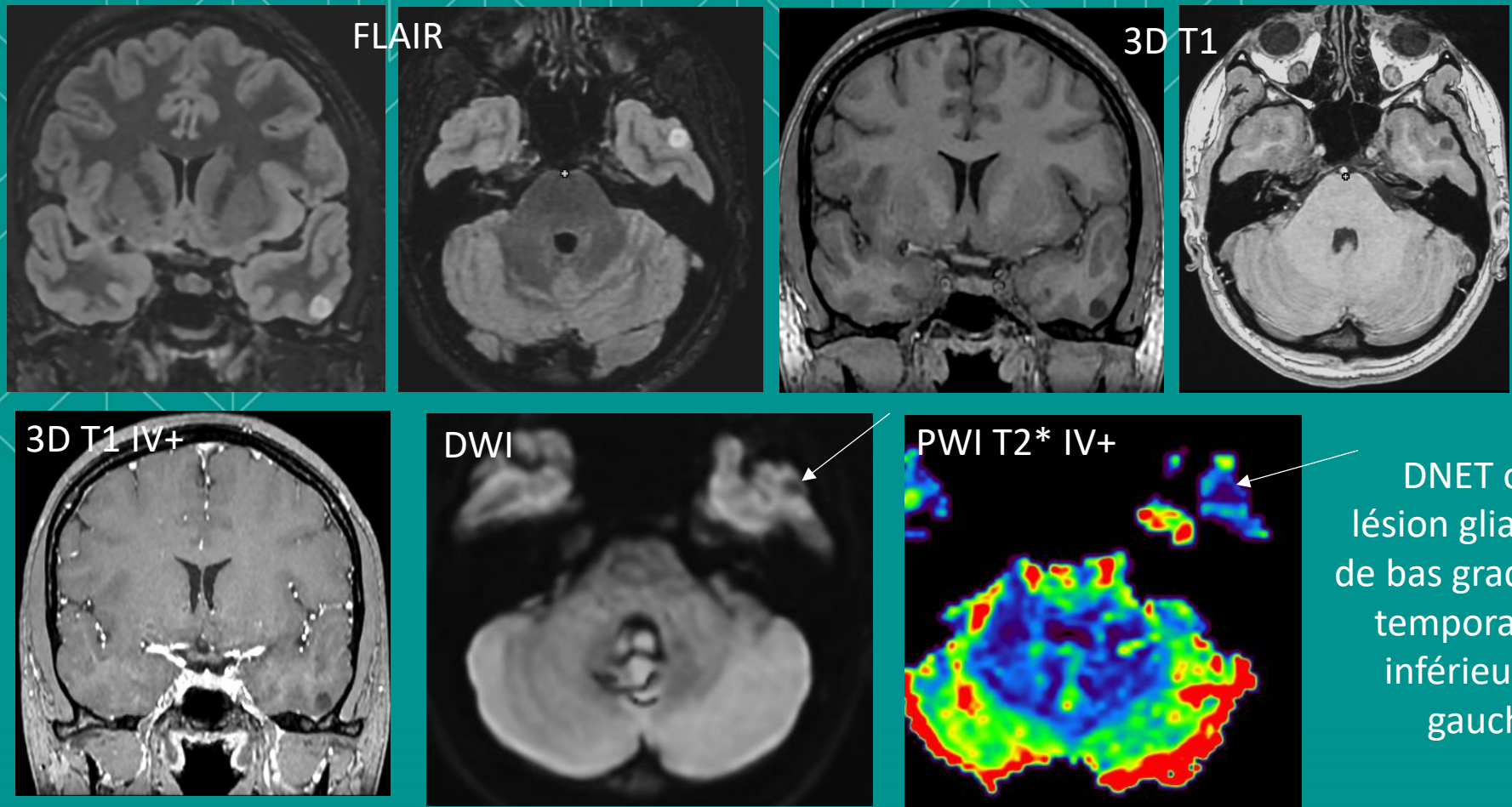
Homme de 75 ans, 1<sup>ère</sup> crise convulsive généralisée  
ATCD d'AVC ischémique 5 ans auparavant





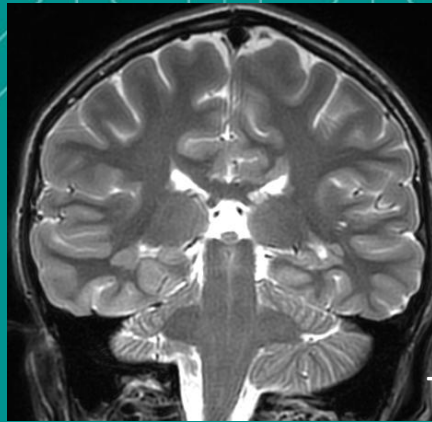
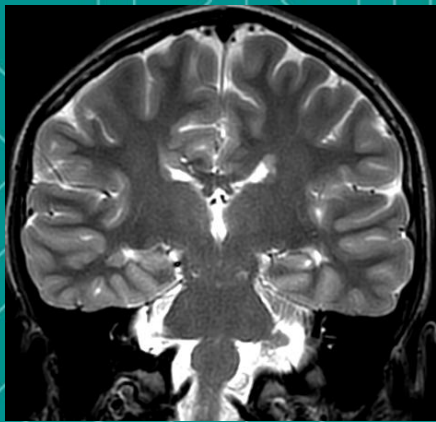
Lésion  
giale de  
bas grade  
pariétale  
gauche

Femme de 27 ans, 1<sup>ère</sup> crise convulsive généralisée

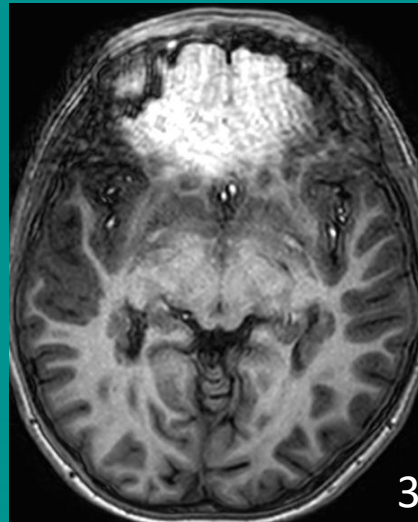
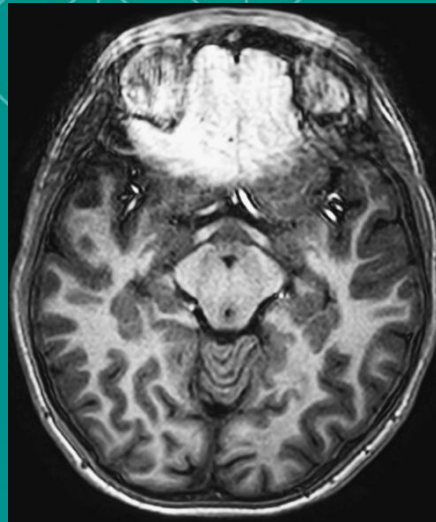
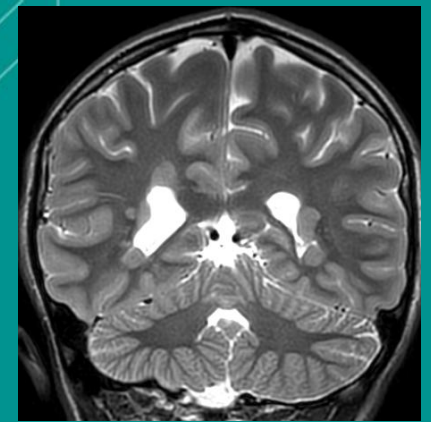
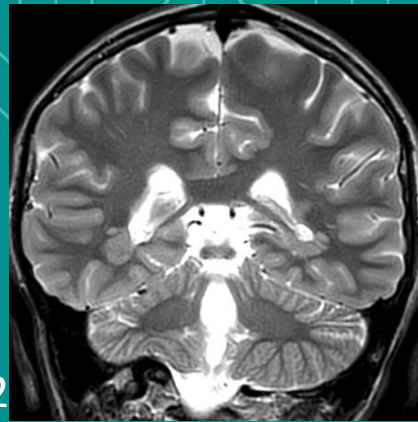


Femme de 24 ans, crises convulsives généralisées depuis 2016, traitement anti-épileptique depuis 6 mois

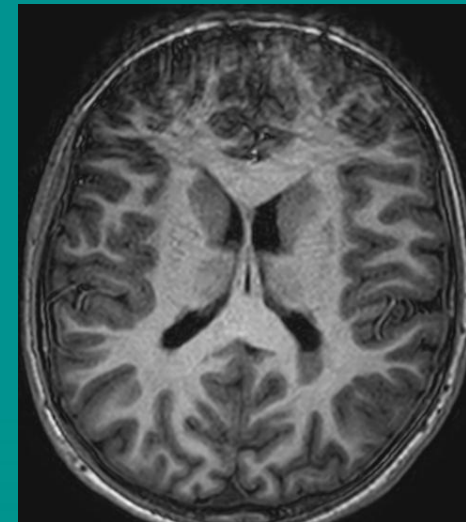
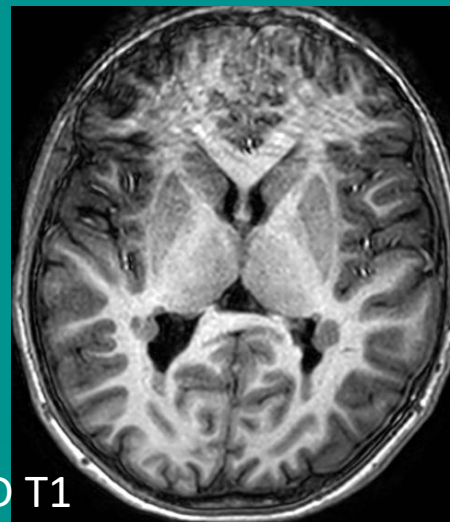




T2

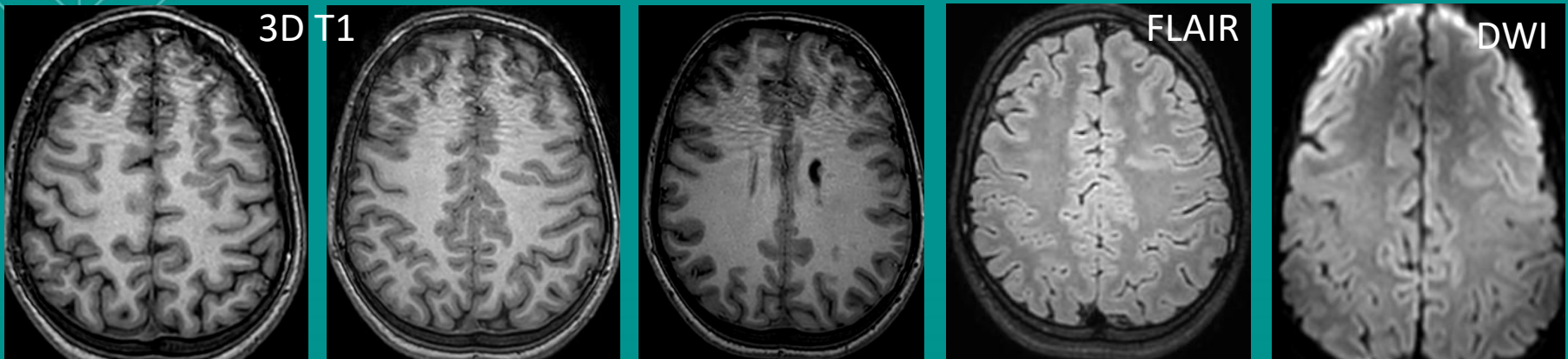
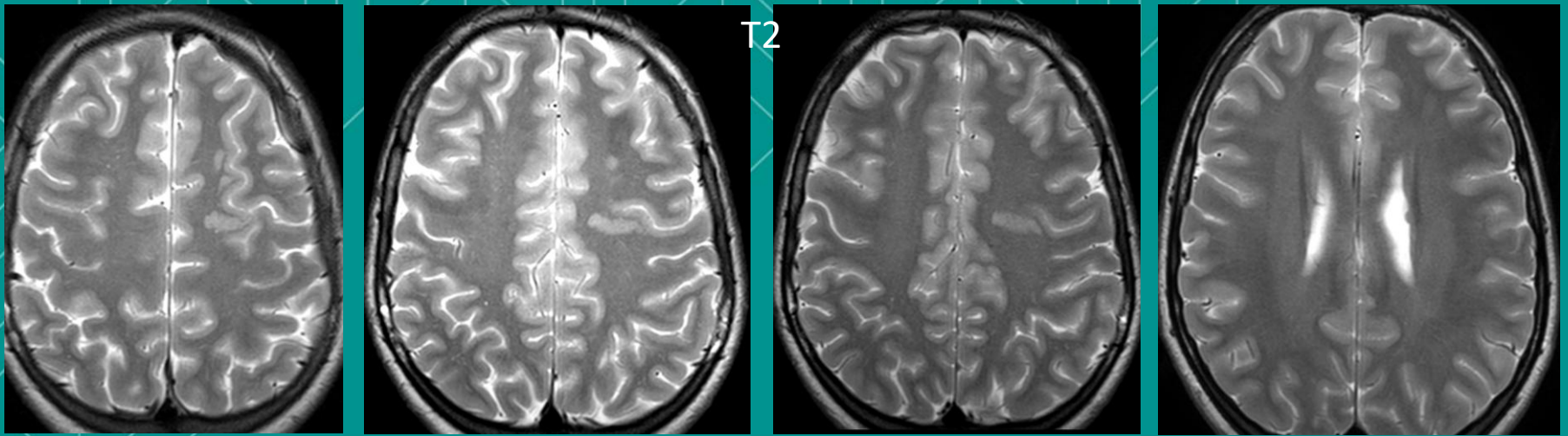


3D T1



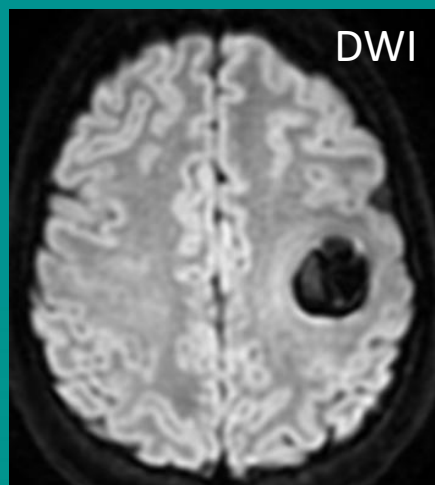
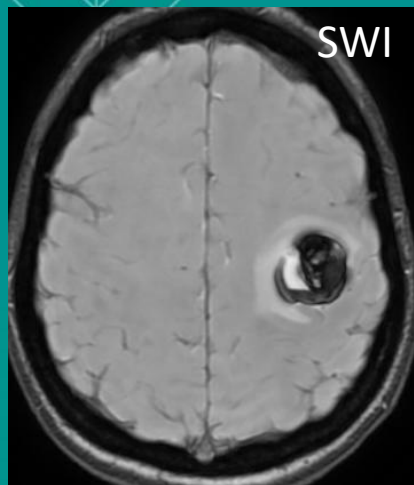
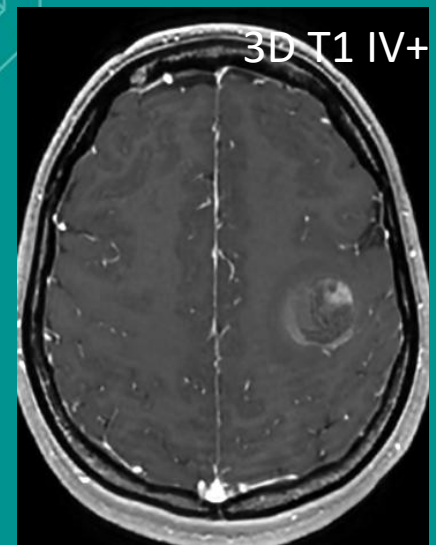
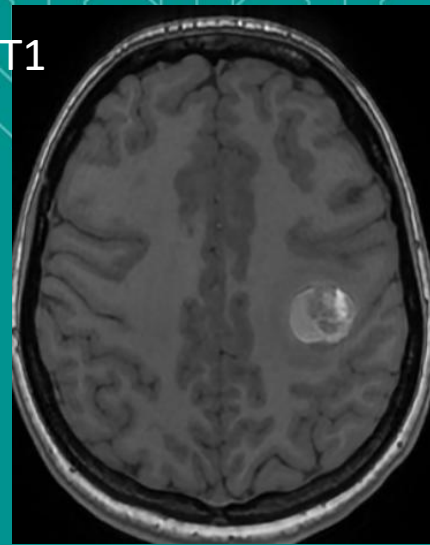
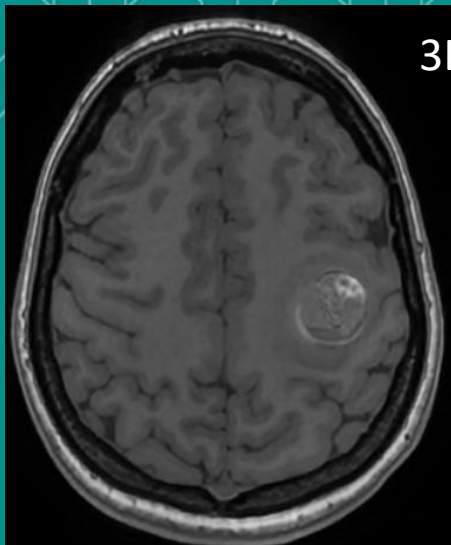
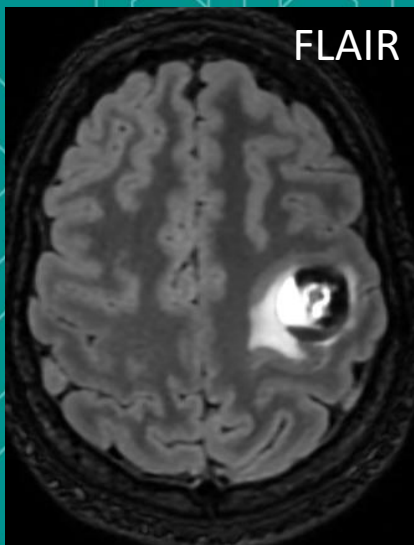
Homme de 13 ans, épisodes d'absences

Hétérotopies nodulaires  
périvericulaires  
bilatérales



4e PC avec version de la tête à D et trouble sensoriel  
du membre sup D

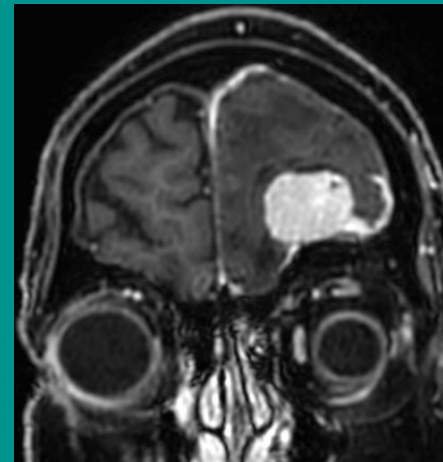
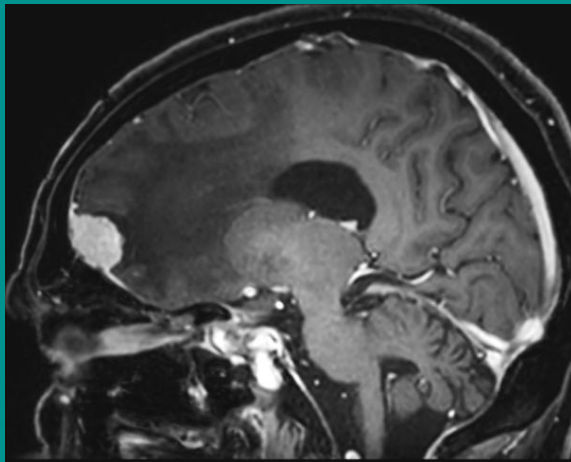
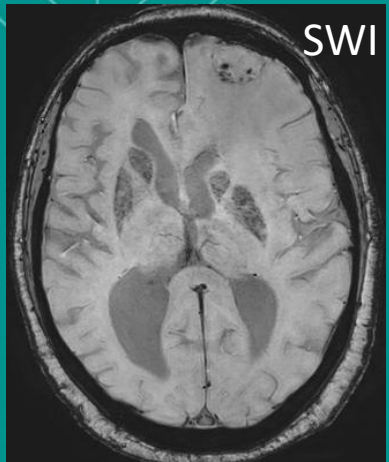
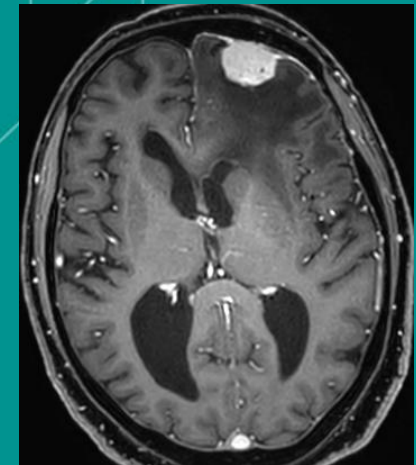
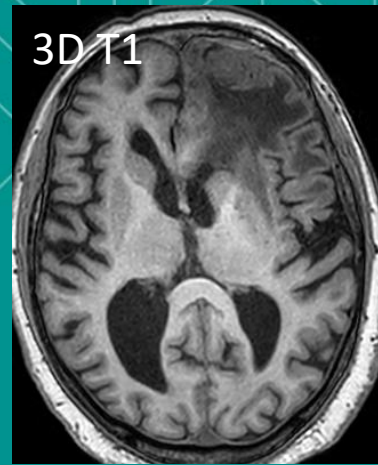
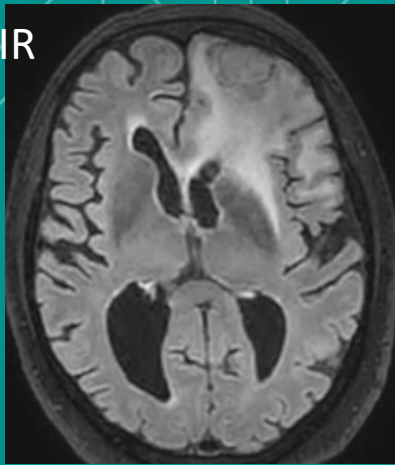
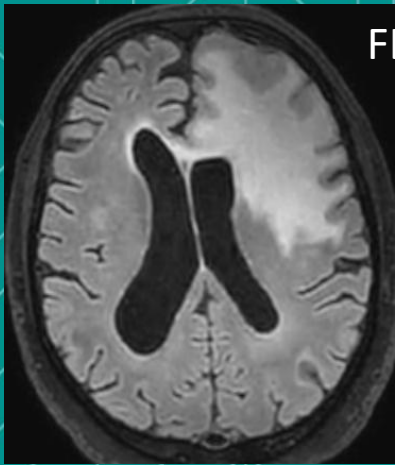
Hétérotopies nodulaires  
sous-corticales et péri-  
ventriculaire gauches



Femme de 23 ans, crises focales motrices  
brachiofaciales droites depuis 3 jours,  
céphalées

Cavernome frontal pré-  
central gauche compliqué  
de saignement aigu





Méningiome  
frontal  
gauche avec  
important  
œdème péri-  
lésionnel et  
effet de  
masse

Homme de 81 ans, 1<sup>ère</sup> crise convulsive généralisée

1. Les crises convulsives structurelles :  
une diversité de lésions à l'origine de  
l'hyperexcitation corticale
2. Une IRM optimisée : clé pour  
caractériser ces lésions